

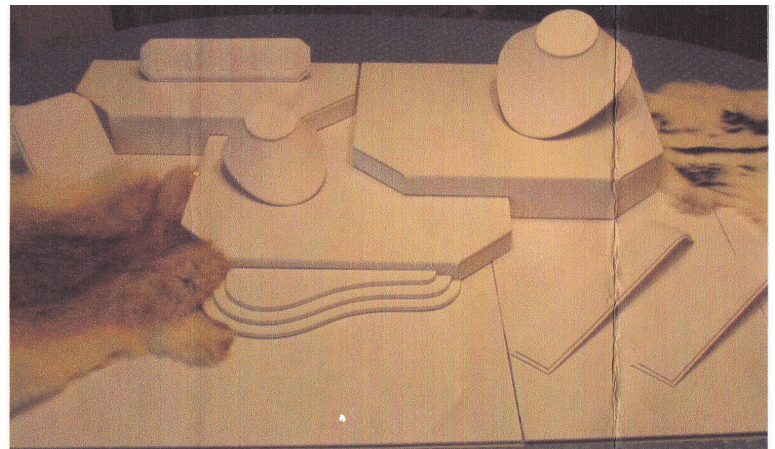
Midland Gem & Mineral Society

MGMS Newsletter

Website: MidlandGemAndMineral.orgE-mail: mgmstx@gmail.com**March 6 Board Meeting**

President Bauer called the meeting to order. Board member Halepeska was absent. Since there were no corrections or additions, the minutes of the February 7 meeting stood approved as published in the newsletter. Treasurer David Richardson read the financial report. Motion was made by Lois Harrington and seconded by Tommy Mayo to accept the financial report. Motion carried. David Richardson reported that a moving day is being put together to move all of the items from the Kentucky Street Warehouse rental storage unit to our old shop at 801 North Fort Worth Street. David said that James Darby was looking at prices for a rental truck with a lift on the tailgate. After some discussion, it was decided to hold the moving day on Saturday, March 31. Herman Jones gave the Sunshine Chairman report. Club Liaison, Herman Jones, asked for volunteers to help staff our booth at the Scottish-Irish Celtic Fair. Webmaster Katrina Cornell reported that our website domain name has been renewed for two years. After some discussion, motion was made by Tommy Mayo and seconded by Lois Harrington to make the new saw oil available to members for \$20.00 a gallon. Motion carried. Motion was made by Lyn Yater and seconded by Jeffrey Cornell to have the used saw oil available to members for \$15.00 a gallon. Motion carried. However, discussion followed concerning regulating amounts of the saw oil sold to members due to possible abuse of its availability. Motion was made by Tommy Mayo and seconded by Oneita Burgess to table discussion of limiting the amount of saw oil sold to members. Motion carried. Class Chair, Jacqueline Darby, reported that the lapidary class is just about to finish up. The silversmith class is still running. Field Trip Chair, Anna Richardson, reported that 13 people had signed up to go to the rock hunts in Deming, New Mexico. Oneita Burgess proposed that we should draft a written policy to be presented to the board concerning members going to collect by themselves after being part of a fully sanctioned (by the property owner & our organization), organized (to know who will be where when) and insured (part of every member's dues pays for this) rock hunt sponsored by Midland Gem and Mineral Society. There was discussion concerning

making certain that we can properly access the projection system at the Sibley Center for powerpoint presentations at our general meetings. David Richardson reported that Sam Foreman brought some of his own Roundup weed killer to the MGMS Scharbauer House property, and with the assistance of Francis Foreman and Herman Jones, sprayed a big area, so hopefully we will see fewer weeds there. David also said that Craig Tellinghuisen brought some rubber runners to help stop tracking mud by putting them in front of the storage shed. Meeting adjourned.



FOR SALE: Professional display forms, boards and risers for jewelry (see photo above). Asking one-half of original price. Contact Anita Tedford, 3408 Rocky Lane Rd., Odessa, Texas 79762

E-mail: altedford@cablone.net

For sale: Craftsman auto creeper, Larin 4,000 lb. floor jack and Larin 2 ton jack stand. Contact George Harris 432-694-8119.

For sale: Satellite J-100 Kiln. Heating element works, fires to 500° under 10 minutes, interior fire brick in great shape (not broken). Dimensions: Exterior - 17.5" tall, 13.75" wide, 14" deep. Interior - 8.5" wide, 6.5" tall. Includes kiln stand, gloves, 2 asbestos tiles, wax, cones, and a few other items. Printout type manual for operation. Contact: Susan Merritt (254) 694-9655.

≡ **SHOW CALENDAR** ≡

April 14 & 15...ABILENE, TEXAS

Central Texas Gem & Mineral Society's Show
Abilene Civic Center
North 6th and Pine Street
Hours: Sat. 10 – 6, Sun. 10 – 5.
Rollin' Rock Club meeting: Sunday, 9:00 am
Contact: Linda Hollowell (325) 721-4477
Website: www.txol.net/rockclub

April 20 - 22...ALPINE, TEXAS

Chihuahuan Desert Gem & Mineral Club's Annual
"Alpine Agate Festival" Show
FREE ADMISSION
Alpine Civic Center
Highway 90 West
Hours: Fri. & Sat. 9 – 6, Sun. 10 – 5.
Contact: Mary Brogan (432) 386-2340
E-mail: marybrogan@rocketmail.com

April 28 & 29...LUBBOCK, TEXAS

Lubbock Gem & Mineral Society's 54th Annual Show
Lubbock Civic Center
1501 Mac Davis Lane
Hours: Sat. & Sun. 10 – 5.
Contact: Archie Scott (806) 894-1584
E-mail: sarchie32@yahoo.com
Website: lubbockgemandmineral.org

Unless otherwise noted, all gem and mineral shows in the U.S. do charge an admission fee.

ALWAYS call or e-mail to verify ALL show info BEFORE YOU GO! Not responsible for typos or info from club flyers having different hours, etc.

FOR MORE SHOW LISTINGS FOR ALL 50 STATES, GO TO www.rockngem.com

Joke of the Month: "What's the dog's job?"

A grandfather was delivering his grandchildren to their home one day when a fire truck zoomed past. Sitting in the front seat of the fire truck was a Dalmation dog. The children started discussing the dog's duties.

"They use him to keep crowds back," said one child.

"No," said another. "He's just for good luck."

A third child brought the argument to a close.

"They use the dogs," she said firmly, "to find the fire hydrants."

2012 OFFICERS

President: Thomas Bauer
president@midlandgemandmineral.org
Vice President: Sharon Winchester
vicepresident@midlandgemandmineral.org
Secretary: Daniel Jones
secretary@midlandgemandmineral.org
Treasurer: David Richardson
treasurer@midlandgemandmineral.org

BOARD MEMBERS

Oneita Burgess 2012 - 2014
Jeffrey Cornell 2012 - 2014
Lois Harrington 2011 - 2013
Tommy Mayo 2011 - 2013
Lyn Yater 2010 - 2012
Bill Halepeska 2010 - 2012

2012 CHAIRS

Building Committee: Bill Halepeska
building@midlandgemandmineral.org
Class Chair: Jacqueline Darby
classes@midlandgemandmineral.org
Club Liaison: Herman Jones
clubliaison@midlandgemandmineral.org
Communications Committee:
Newsletter Editor: Daniel Jones
mgmstx@gmail.com
Webmaster: Katrina Cornell
webmaster@midlandgemandmineral.org
Rock Hunt Field Trips: Anna Richardson
fieldtrips@midlandgemandmineral.org
Finance Committee: Tom Wurster
finance@midlandgemandmineral.org
Petroleum Museum Liaison: Bob Price
Scholarship: Linda Bryant & Mary Tellinghuisen
Shop: Mark Burgess & James Darby
shop@midlandgemandmineral.org
Show: Tom Wurster & Bill Halepeska
show@midlandgemandmineral.org
Refreshment Coordinator: Jennifer Bauer
Social: Lois Harrington
Sunshine: Herman Jones
sunshine@midlandgemandmineral.org

Advisory Board: Alynda Best, Mike Bradford, Mary Lou Cassidy, Bob Dawson, Timber Floyd, Charlie Harris, Frank Hawk, Susie Hitchcock-Hall, Norm Johnson, Don Judson, Guy McCrary, Dr. Richard Pietila, Kathy Shannon, Charles Spence and Burr Williams.